



The report shall not be reproduced without written approval from Intertek  
Attention is drawn to the Terms and Conditions for Inspection printed overleaf.

## TEST REPORT

Number: BKKH10052780

Applicant: PT.KAILO SUMBER KAHSIH  
KOMP.INDUSTRIAL JABABEKA BLOK K1J  
HARJA MEKAR, CIKARANG  
ATTN: ITA DADAN

Date: Nov 08, 2010

### Sample description:

One (1) bottle of submitted sample said to be Ink white

Item nam: Ink white  
Date sample received: November 04, 2010  
Testing period: November 04, 2010 to November 08, 2010



\*\*\*\*\*

### Test conducted :

As requested by the applicant, for details please refer to attached page(s)  
Type of test: RoHS wet chemical analysis

\*\*\*\*\*

### Summary :

| <u>Tested samples</u> | <u>Standard</u>   | <u>Result</u> |
|-----------------------|---|---------------|
| Submitted sample      | With reference to test method<br>of IEC 62321 – Edition 1.0 : 2008<br>and limits quoted from<br>RoHS Directives 2002/95/EC and<br>Amendment 2005/618/EC | Pass          |

\*\*\*\*\*

Authorized by :  
For Intertek Testing Services (Thailand)

Phanit Hitapong  
Division Manager  
Toys & Hardlines Division



The report shall not be reproduced without written approval from Intertek  
Attention is drawn to the Terms and Conditions for Inspection printed overleaf.

# TEST REPORT

Number: BKKH10052780

Test conducted :

(A) Test result summary:

| Testing item                            | Result (mg/kg)    |
|---|-------------------|
|   | Submitted samples |
| Cadmium (Cd) Content                    | ND                |
| Lead (Pb) Content                       | ND                |
| Mercury (Hg) Content                    | ND                |
| Chromium VI (Cr <sup>6+</sup> ) Content | ND                |
| Polybrominated Biphenyls (PBBs)         |                   |
| Monobromobiphenyl (MonoBB)              | ND                |
| Dibromobiphenyl (DiBB)                  | ND                |
| Tribromobiphenyl (TriBB)                | ND                |
| Tetrabromobiphenyl (TetraBB)            | ND                |
| Pentabromobiphenyl (PentaBB)            | ND                |
| Hexabromobiphenyl (HexaBB)              | ND                |
| Heptabromobiphenyl (HeptaBB)            | ND                |
| Octabromobiphenyl (OctaBB)              | ND                |
| Nonabromobiphenyl (NonaBB)              | ND                |
| Decabromobiphenyl (DecaBB)              | ND                |
| Polybrominated Diphenyl Ethers (PBDEs)  |                   |
| Monobromodiphenyl Ether (MonoBDE)       | ND                |
| Dibromodiphenyl Ether (DiBDE)           | ND                |
| Tribromodiphenyl Ether (TriBDE)         | ND                |
| Tetrabromodiphenyl Ether (TetraBDE)     | ND                |
| Pentabromodiphenyl Ether (PentaBDE)     | ND                |
| Hexabromodiphenyl Ether (HexaBDE)       | ND                |
| Heptabromodiphenyl Ether (HeptaBDE)     | ND                |
| Octabromodiphenyl Ether (OctaBDE)       | ND                |
| Nonabromodiphenyl Ether (NonaBDE)       | ND                |
| Decabromodiphenyl Ether (DecaBDE)       | ND                |

Name of operation: Kritsana T.

mg/kg = Milligram per kilogram based on weight of sample = ppm  
ND= Not detected

Tested component: White ink

\*\*\*\*\*



The report shall not be reproduced without written approval from Intertek  
Attention is drawn to the Terms and Conditions for Inspection printed overleaf.

## TEST REPORT

Number: BKKH10052780

Test conducted :

(B) RoHS Requirement:

| Restricted substances                  | Limits            |
|--|-------------------|
| Cadmium (Cd)                           | 0.01% (100 mg/kg) |
| Lead (Pb)                              | 0.1% (1000 mg/kg) |
| Mercury (Hg)                           | 0.1% (1000 mg/kg) |
| Chromium (VI) (Cr <sup>6+</sup> )      | 0.1% (1000 mg/kg) |
| Polybrominated Biphenyls (PBBs)        | 0.1% (1000 mg/kg) |
| Polybrominated Diphenyl Ethers (PBDEs) | 0.1% (1000 mg/kg) |

The above limits were quoted from 2002/95/EC and Amendment 2005/618/EC for homogeneous material.

(C) Test method:

| Testing item   | Testing method  | Limit of quantification |
|--|---|-------------------------|
| Cadmium (Cd) Content   | With reference to IEC 62321 Edition 1.0 : 2008, by acid digestion and determined by ICP-OES   | 2 mg/kg                 |
| Lead (Pb) Content  | With reference to IEC 62321 Edition 1.0 : 2008, by acid digestion and determined by ICP-OES   | 2 mg/kg                 |
| Mercury (Hg) Content   | With reference to IEC 62321 Edition 1.0 : 2008, by acid digestion and determined by ICP-OES   | 2 mg/kg                 |
| Chromium VI (Cr <sup>6+</sup> ) Content                                  | With reference to IEC 62321 Edition 1.0 : 2008, by alkaline digestion and determined by UV-VIS spectrophotometer                            | 1 mg/kg                 |
| Polybrominated Biphenyls (PBBs) & Polybrominated Diphenyl Ethers (PBDEs) | With reference to IEC 62321 – Edition 1.0: 2008, by solvent extraction and determined by GC/MS and further HPLC confirmation when necessary | 5 mg/kg                 |

Remark: Reporting limit = Quantitation limit of analyte in sample

\*\*\*\*\*

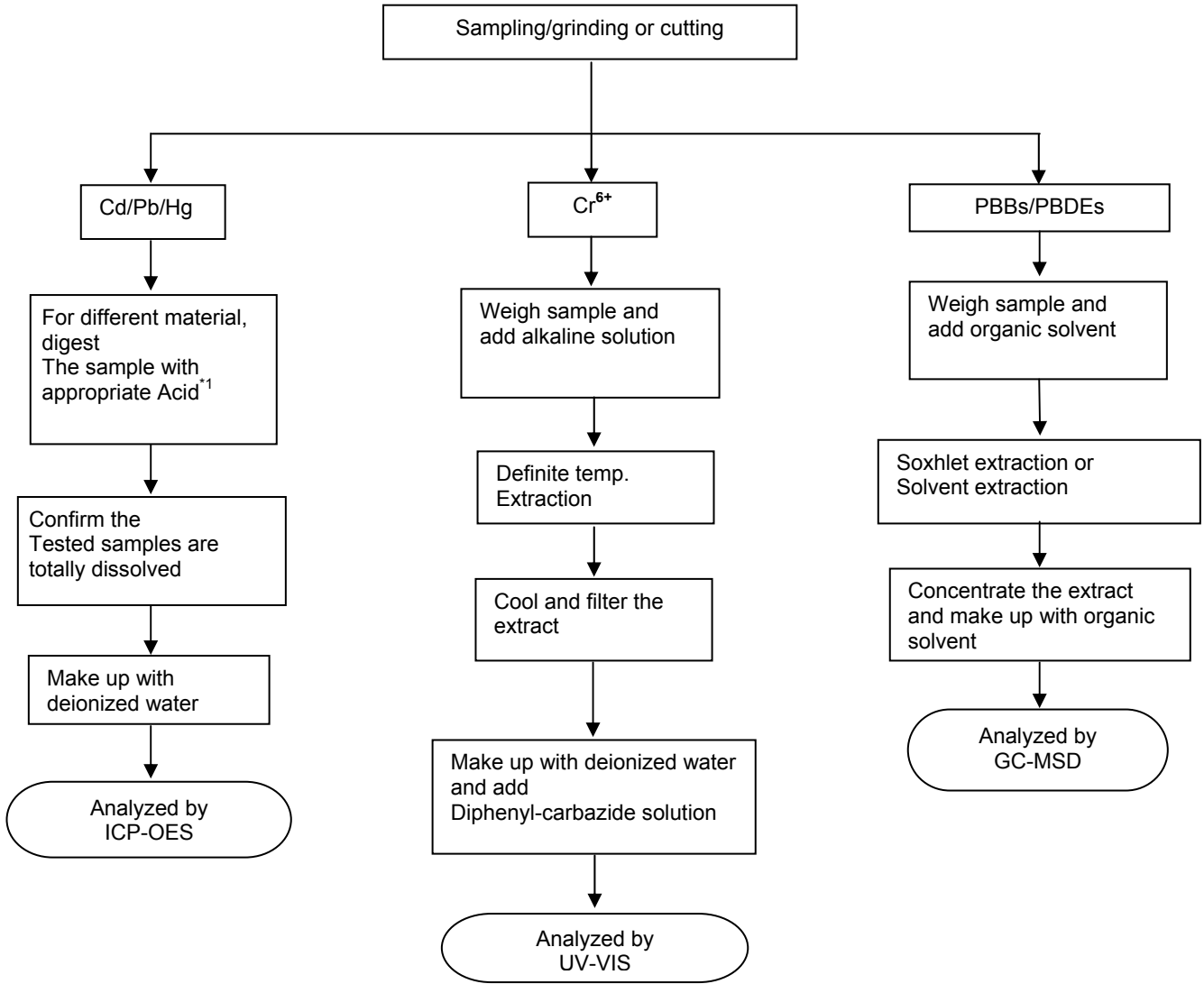
**TEST REPORT**

Number: BKKH10052780

(D) Measurement Flowchart

Test for Cd/Pb/Hg/Chromium (VI)/PBBs/PBDEs Contents

Reference Standard: IEC 62321–Edition 1.0: 2008



Remarks:

\*1: list of appropriate Acid:

| Material | Acid added for digestion                              |
|----------|---|
| Polymers | HNO <sub>3</sub> , HCl, H <sub>2</sub> O <sub>2</sub> |

\*\*\*\*\* E N D \*\*\*\*\*/NU/DE/SAN